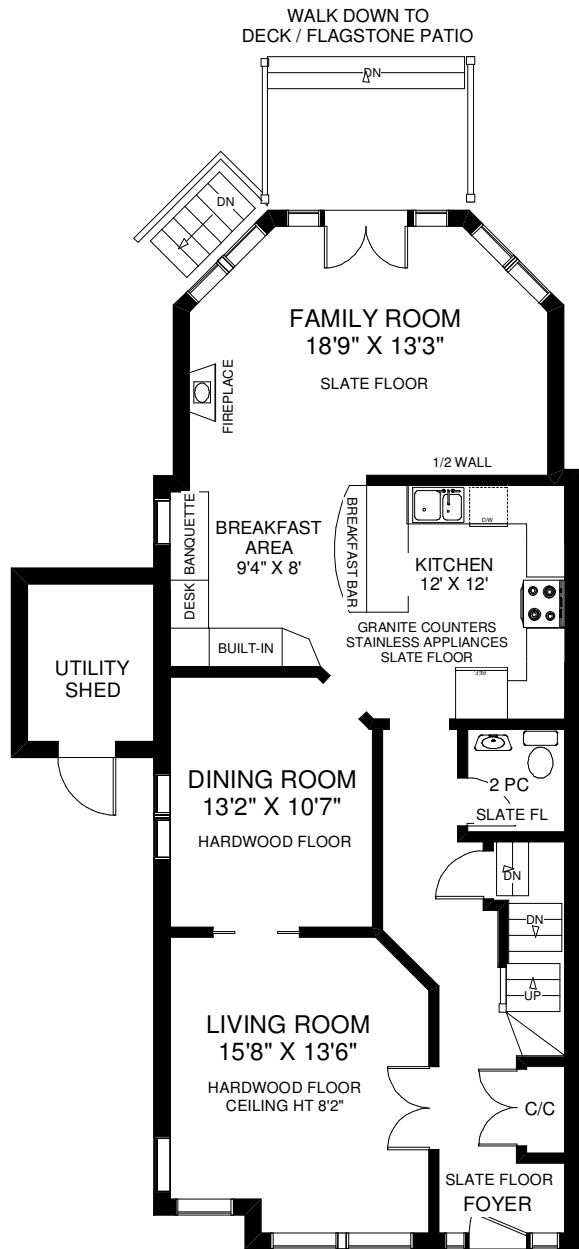


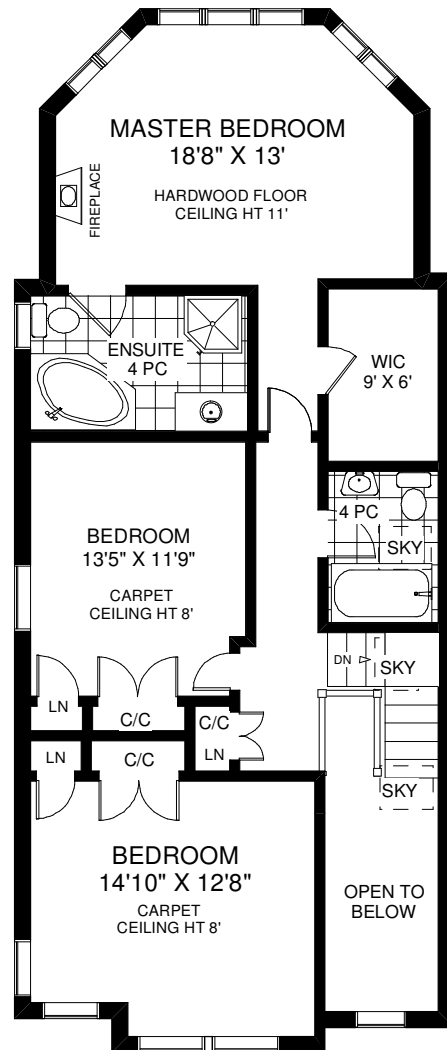
40 QUEEN ANNE ROAD



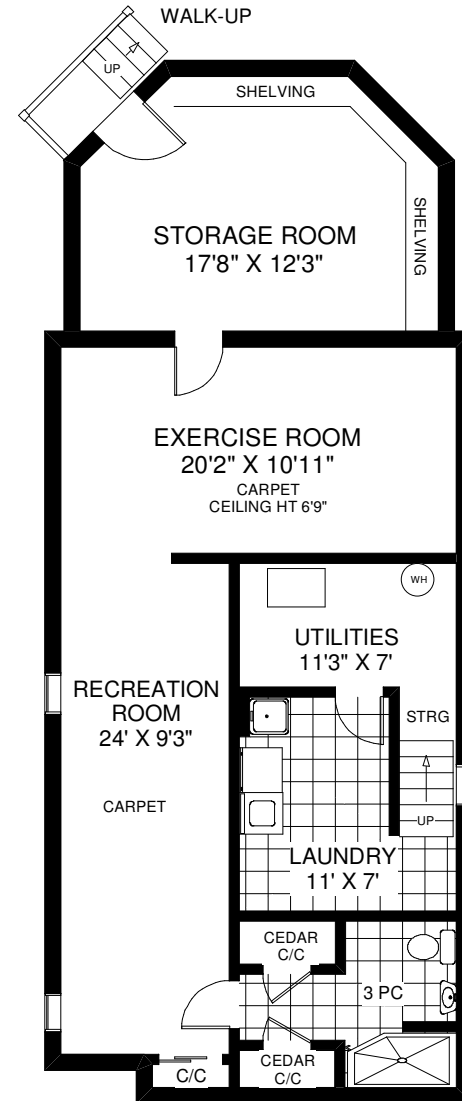
TOTAL ABOVE GRADE SQUARE FOOTAGE 2,198



MAIN FLOOR
APPROXIMATELY 1,159 SQ FT



SECOND FLOOR
APPROXIMATELY 1,039 SQ FT



LOWER FLOOR
APPROXIMATELY 1,159 SQ FT

Note: Measurements & Calculations are approximate. Provided as a guideline only.