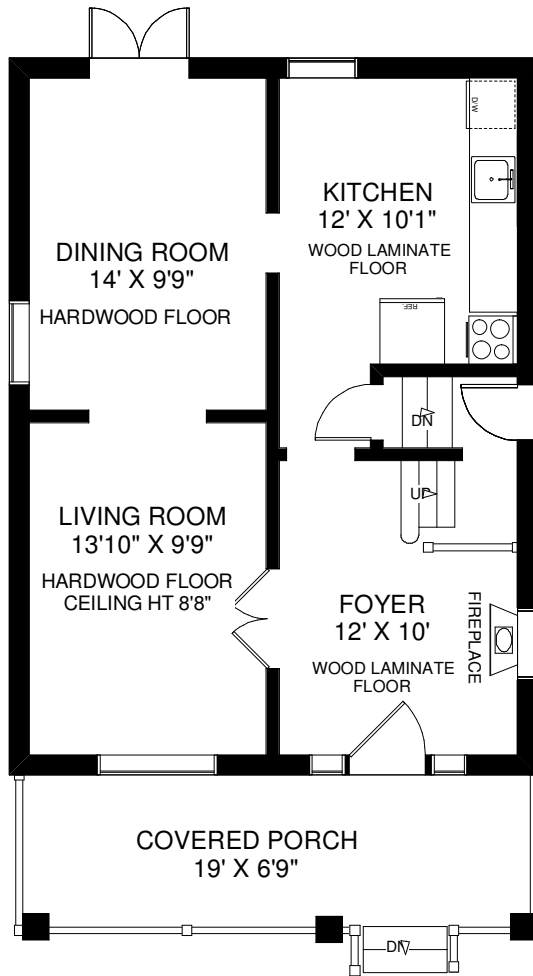


241 QUEBEC AVENUE

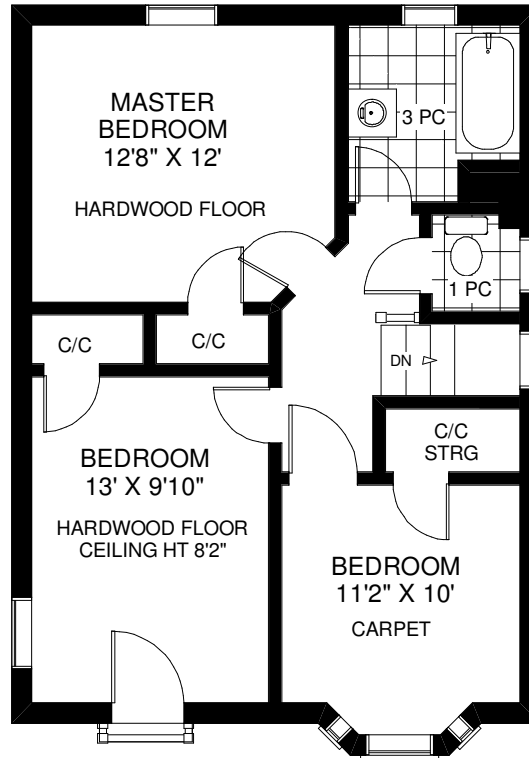
TOTAL SQUARE FOOTAGE APPROXIMATELY 1,328



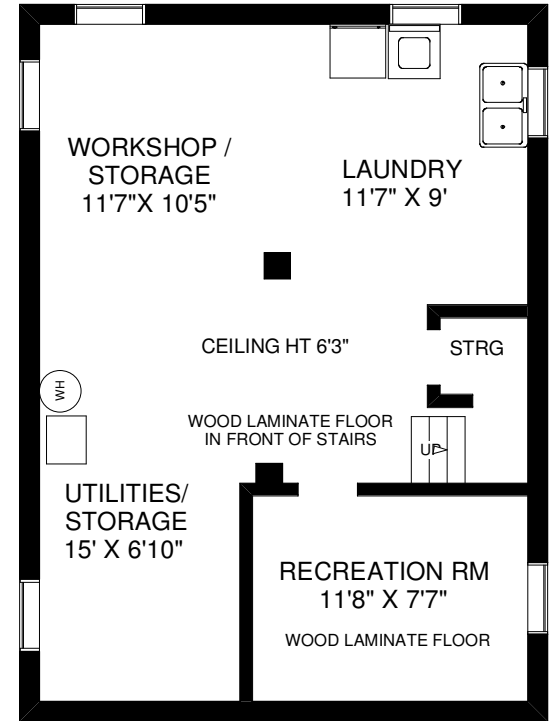
WALK-OUT TO DECK
19' X 7'8"



MAIN FLOOR
APPROXIMATELY 659 SQ FT



SECOND FLOOR
APPROXIMATELY 669 SQ FT



LOWER FLOOR
APPROXIMATELY 659 SQ FT

FLOOR PLANS BY KIM DORNEY
647-989-6526

Note: Measurements & Calculations are approximate. Provided as a guideline only.