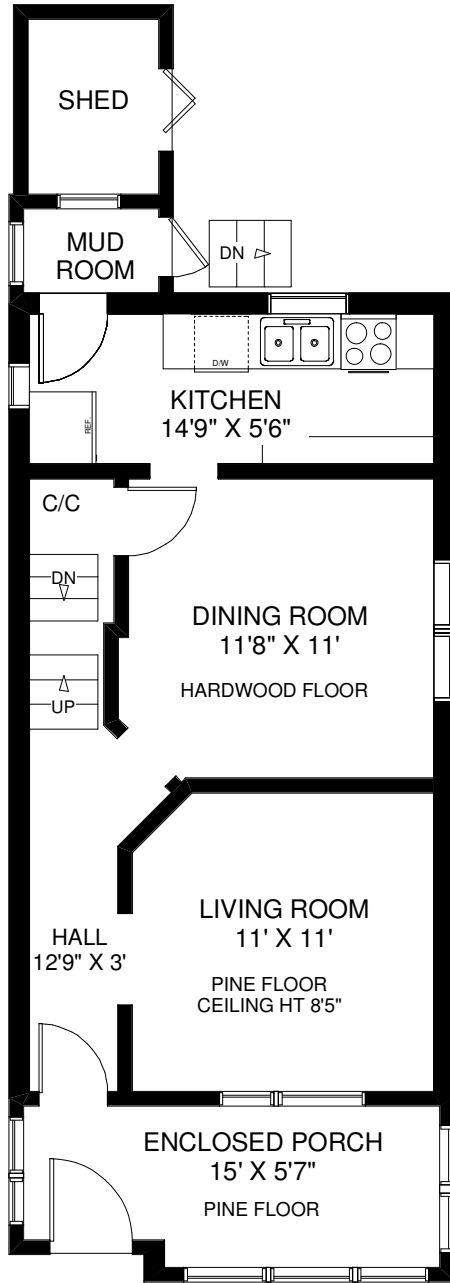
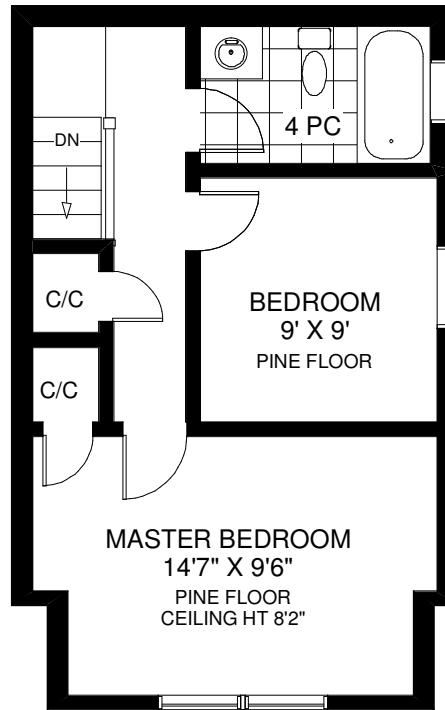


68 PRISCILLA AVENUE

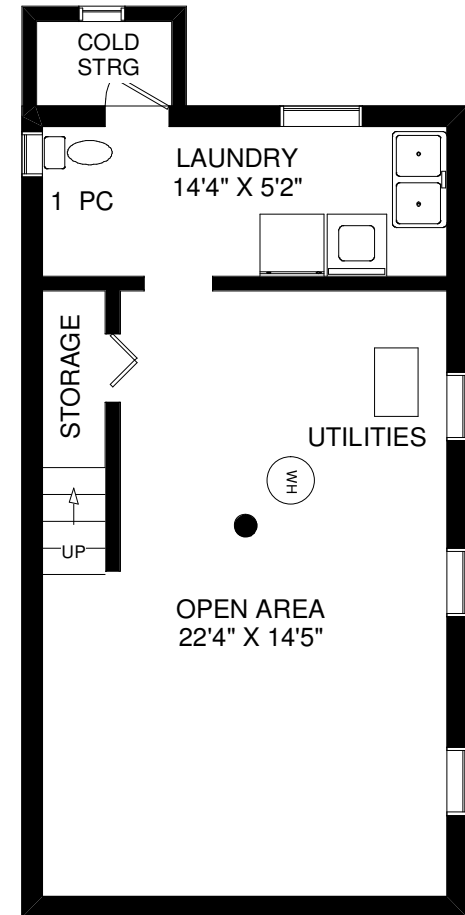
TOTAL ABOVE GRADE SQUARE FOOTAGE 998



MAIN FLOOR
APPROXIMATELY 599 SQ FT
(INCLUDING PORCH AND MUD ROOM)



SECOND FLOOR
APPROXIMATELY 399 SQ FT



LOWER FLOOR
APPROXIMATELY 479 SQ FT

Note: Measurements & Calculations are approximate. Provided as a guideline only.