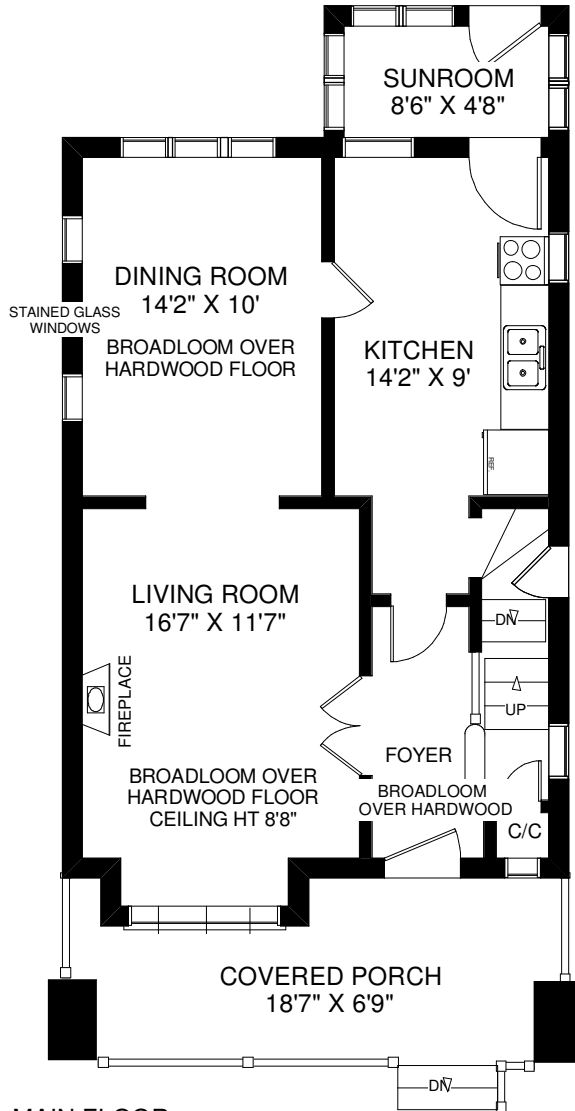
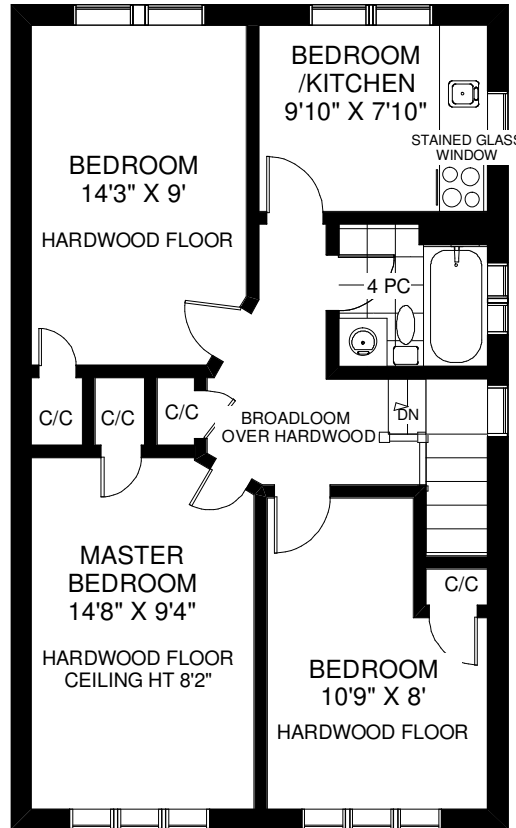


# 308 DURIE STREET

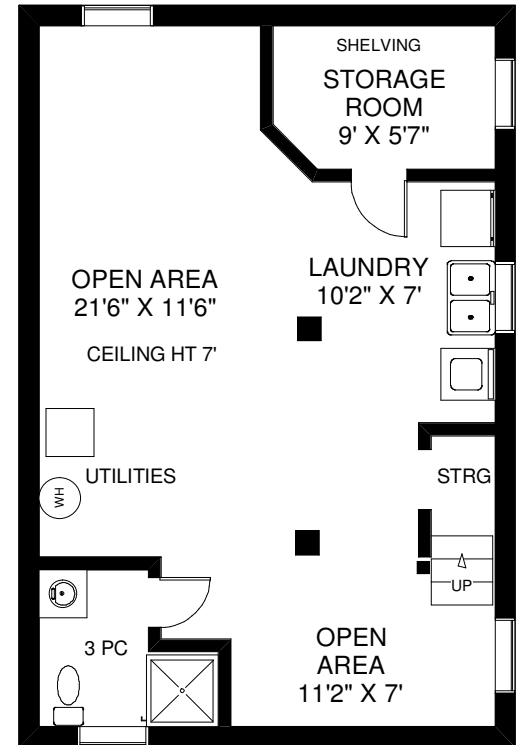
TOTAL SQUARE FOOTAGE APPROXIMATELY 1,438



**MAIN FLOOR**  
APPROXIMATELY 729 SQ FT



**SECOND FLOOR**  
APPROXIMATELY 709 SQ FT



**LOWER FLOOR**  
APPROXIMATELY 639 SQ FT

Note: Measurements & Calculations are approximate. Provided as a guideline only.

FLOOR PLANS BY KIM DORNEY  
647-989-6526