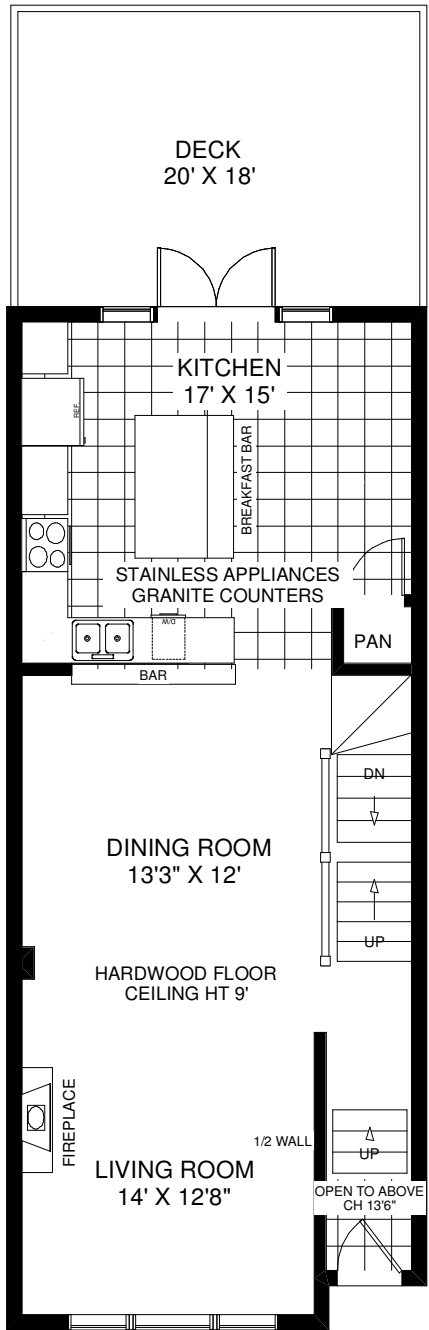
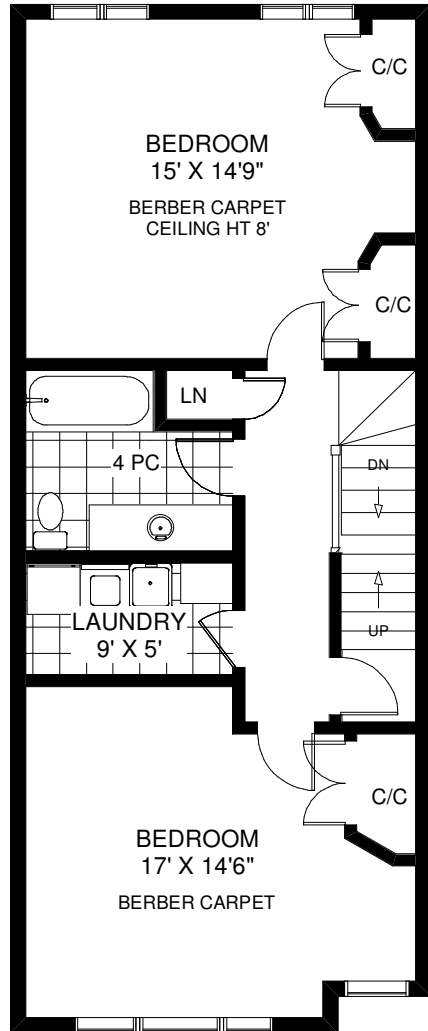


238A BERRY ROAD

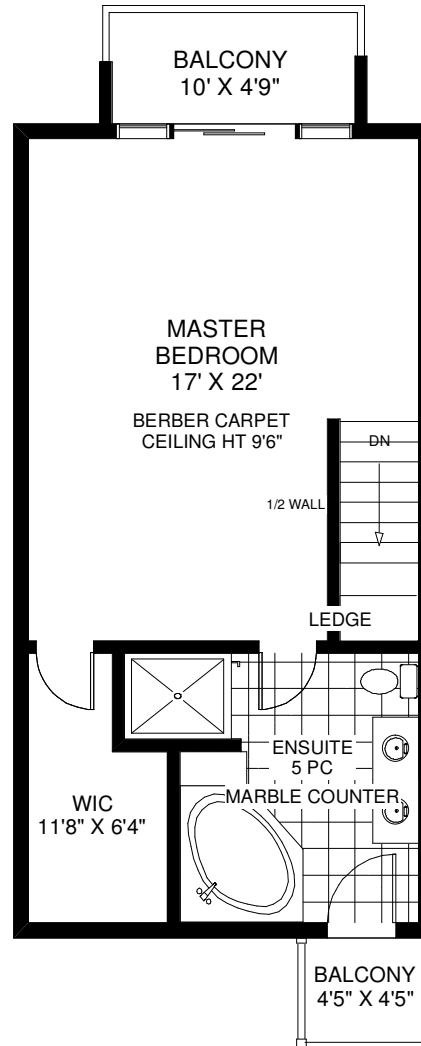
TOTAL ABOVE GRADE SQUARE FOOTAGE 2,297



MAIN FLOOR
APPROXIMATELY 819 SQ FT



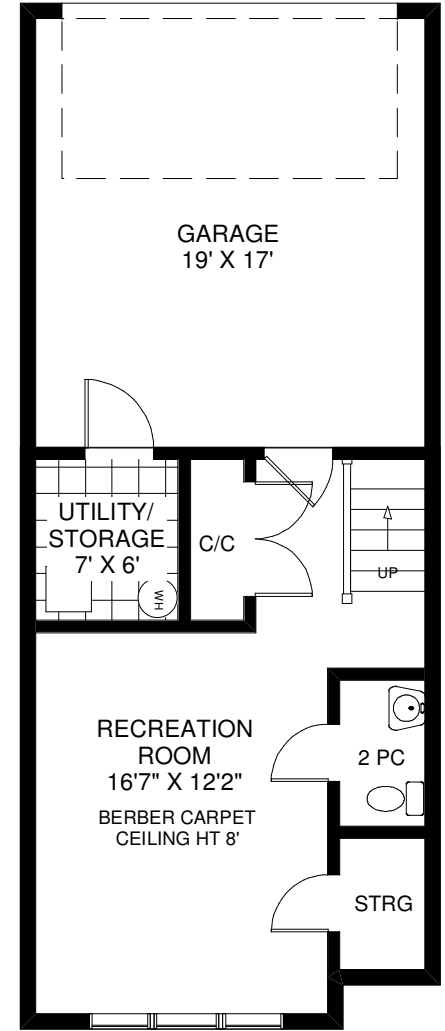
SECOND FLOOR
APPROXIMATELY 819 SQ FT



THIRD FLOOR
APPROXIMATELY 659 SQ FT

Note: Measurements & Calculations are approximate.
Provided as a guideline only.

FLOOR PLANS BY KIM DORNEY
647-989-6526



LOWER FLOOR
APPROXIMATELY 459 SQ FT