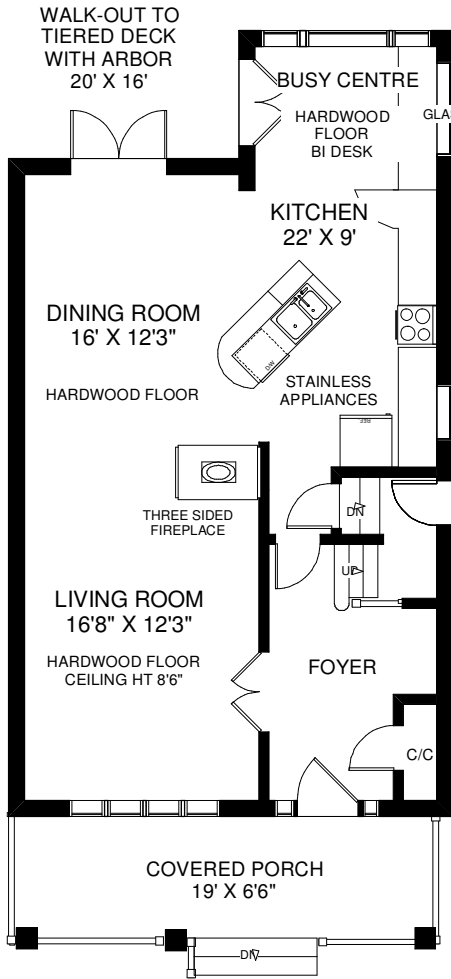
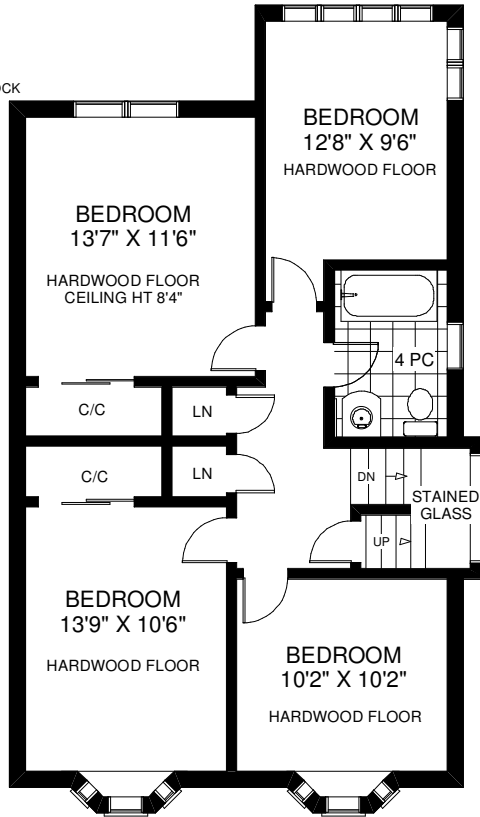


# 299 DURIE STREET

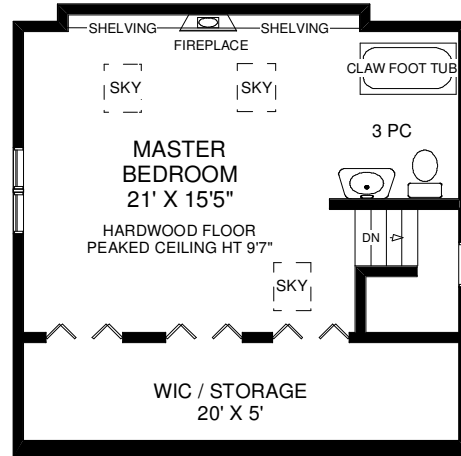
TOTAL ABOVE GRADE SQUARE FOOTAGE  
APPROXIMATELY 2,337



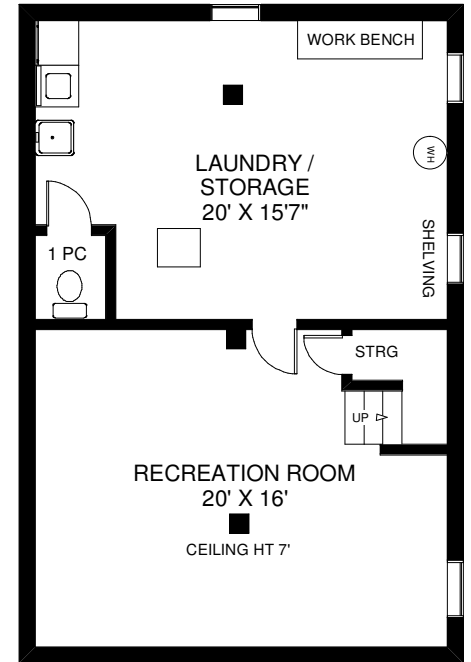
MAIN FLOOR  
APPROXIMATELY 869 SQ FT



SECOND FLOOR  
APPROXIMATELY 919 SQ FT



THIRD FLOOR  
APPROXIMATELY 549 SQ FT



LOWER FLOOR  
APPROXIMATELY 799 SQ FT

Note: Measurements & Calculations are approximate. Provided as a guideline only.